



LARRIKIN PUPPETS RATE CARD FOR PRIMARY SCHOOLS



- Puppet Show with Larrikin Puppets
- Storytime & Book Week Puppet Shows
- General Themed & Curriculum Aligned Puppet Shows (e.g. Kindness & Anti-Bullying, Health & Wellbeing, Sea Life Discovery, Christmas, Australia, Halloween)

45 mins

There's no cap on audience numbers and we don't charge per head, so audience numbers vs number of shows is your call based on programming format and the space available. These shows can be performed in any space (e.g. hall, double classroom).

If adequate audience space is available:

1-100 students = \$575+GST (for 100 students that's \$5.75 per student)

101-200 students = \$625+GST (for 200 students that's \$3.12 per student)

201-400 students = \$675+GST (for 400 students that's \$1.68 per student)

401-600 students = \$725+GST (for 600 students that's \$1.20 per student)

601 students and over = \$775+GST (for 1000 students that's 77c per student)

If adequate audience space is unavailable and more than one show is required:

2 shows (1-100 students per show) = \$1050+GST (\$525 per show)

3 shows (1-100 students per show) = \$1500+GST (\$500 per show)

Contact us for additional discount options for different student numbers.

* Bulk discount rates are only available for bookings of multiple shows at the same location on the same day OR for multiple shows at the same location across consecutive days if the puppet theatre is able to remain set up (secure and dry) for duration of the booking. Examples include 3 story time shows in one day at a Book Week event or 1 workshop a day on both Tuesday & Wednesday.





LARRIKIN PUPPETS RATE CARD FOR PRIMARY SCHOOLS

Major Curriculum Aligned Puppet Shows

- What A Wonderful World: A Social Science Puppet Show
- Our Planet At Play School Edition: An Environmental Sustainability Puppet Show
- All Together Now: A Celebration Of Cultural Diversity

1 hour

There's no cap on audience numbers and we don't charge per head, so audience numbers vs number of shows is your call based on programming format and the space available. These shows can only be performed in a performing arts theatre stage/school hall stage only. Sound and lighting is welcome, but not essential.

If adequate audience space is available:

1-100 students = \$750+GST (for 100 students that's \$7.50 per student)

101-200 students = \$800+GST (for 200 students that's \$4 per student)

201-400 students = \$850+GST (for 400 students that's \$2.12 per student)

401-600 students = \$900+GST (for 600 students that's \$1.50 per student)

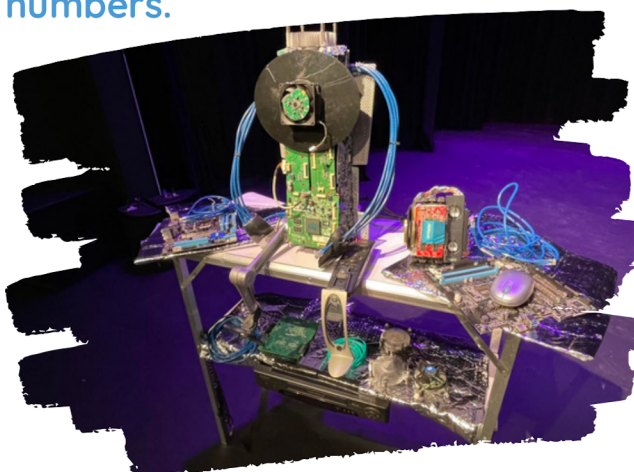
601 students and over = \$950+GST (for 1000 students that's 95c per student)

If adequate audience space is unavailable and more than one show is required:

2 shows (1-100 students per show) = \$1400+GST (\$700 per show)

3 shows (1-100 students per show) = \$1950+GST (\$650 per show)

Contact us for additional discount options for different student numbers.





LARRIKIN PUPPETS RATE CARD FOR PRIMARY SCHOOLS

Puppetry Performance Workshop (1 hour)

Maximum 50 participants - Prep to Year 6

1 workshop, 2 puppeteers - \$675+GST

2 workshops, 2 puppeteers - \$1250+GST (\$625/workshop)*

3 workshops, 2 puppeteers - \$1725+GST (\$575/workshop)* e.g. \$11.50/head for 150 people

Puppetry Performance Workshop Featuring Behind The Scenes Tour (1 1/2 hours)

Maximum 50 participants - Prep to Year 6

1 workshop, 2 puppeteers - \$725+GST

2 workshops, 2 puppeteers - \$1350+GST (\$675/workshop)*

3 workshops, 2 puppeteers - \$1875+GST (\$625/workshop)* e.g. \$12.50/head for 150 people

Puppetry Performance Workshop For Stage & Screen (2 hours)

Maximum 50 participants - Years 5 and 6 only

1 workshop, 2 puppeteers - \$800+GST

2 workshops, 2 puppeteers - \$1500+GST (\$750/workshop)*

3 workshops, 2 puppeteers - \$2100+GST (\$700/workshop)* e.g. \$14/head for 150 people

Monitor Puppetry Workshop For Film & TV (2 hours)

Maximum 30 participants - Years 5 and 6 only

1 workshop, 2 puppeteers - \$800+GST

2 workshops, 2 puppeteers - \$1500+GST (\$750/workshop)*

3 workshops, 2 puppeteers - \$2100+GST (\$700/workshop)* e.g. \$24/head for 90 people





LARRIKIN PUPPETS RATE CARD FOR PRIMARY SCHOOLS

Sock Puppet Making Craft & Performance Workshop (2 1/2 hours)

Minimum of 35 participants OR a minimum charge of \$1225+GST per workshop (equivalent to 35 participants). Suitable for Prep to Year 6.

\$35+GST per person (includes a sock puppet craft kit valued at \$15).

Participant numbers:

You can book for 35 participants or more, but we will need 1 adult supervisor per 10 children. Elissa and Brett count as 2 adult supervisors, so if you have 80 children you will need to provide 6 supervisors. Alternatively you can split the numbers into two separate workshops (e.g. 40 children with 2 extra supervisors).

You can book for 35 participants or more. eg. 50 participants = \$1750+GST. The number of participants is dependant on the size of your space.

Space requirements:

Each participant will need table space to craft and glue their sock puppet. Larrikin Puppets will need a minimum 3m x 3m performance space PLUS space in front for the audience to watch a show and participate in a standing group puppetry performance workshop. The craft activity may take place in the same room or in a different room to the performance workshop. A school hall is the ideal space.

Upfront deposit:

To book the Sock Puppet Making Craft & Performance Workshop, we require a 50% deposit upfront to secure the booking. This gives us a firm commitment and time to purchase the materials and prepare the kits. Bookings must be made a minimum of 10 weeks in advance. A 50% deposit is strictly required to confirm a booking.





LARRIKIN PUPPETS RATE CARD FOR PRIMARY SCHOOLS

Regional Surcharges:

- For any performances over 2 hours and under 2.5 hours drive from our base on Bribie Island, a regional surcharge of \$40+GST is added. Peak hour traffic estimates are taken into consideration.
- For any performances over 2.5 hours and under 3 hours drive from our base on Bribie Island, a regional surcharge of \$90+GST is added. Peak hour traffic estimates are taken into consideration.
- For any performances over 3 hours drive from our base on Bribie Island, a regional surcharge of \$90+GST is added plus a fuel charge plus 1-2 night's accommodation is required.
- For performances over 5 hours drive from our base on Bribie Island, a regional surcharge of \$90+GST is added plus a fuel charge plus stopover accommodation at least every four hours. For health and safety reasons, we do not drive more than 4 hours in one day.
- For any performance over 15 hours drive from our base on Bribie Island, flights, excess luggage fees, accommodation, compatible PA speakers and access to taxis or a hire van are required.
- Unlike many theatre companies, we do not charge for time spent on the road/flying nor time spent at stopover locations.
- Unlike many theatre companies, we do not charge for meals.





LARRIKIN PUPPETS RATE CARD FOR PRIMARY SCHOOLS

IMPORTANT POINTS & FEES

1. PARKING

We have lots of heavy and awkward equipment to load in and set up, so a load in park or permanent park located within 30 metres of the performance space is required. A reserved carpark is appreciated.

3. CANCELLATION FEE

Even though we are a fully booked performing arts company, we like to accommodate our clients' changing circumstances as much as possible. Instead of charging non-refundable 50% deposits, a \$100+GST fee will be invoiced if a performance is cancelled rather than postponed for any reason whatsoever.

4. SPACE REQUIREMENTS

You will need to provide us with a minimum 3m x 3m performance space PLUS space in front for your audience. We need a height of at least 2m.

For audience and performer health and safety, we place a red line 2m in front of our puppet theatre.

See our 'How To Set Up For A Larrikin Puppets Performance' tip sheet for more info.

